

ANTIQUES & COLLECTIBLES

- Regal Wood Burning Cook Stove • 36" & Nice
- Duncan Phyfe Dining Room Set w/ Table & 6 Chairs, Buffet and China Cabinet
- Furniture of All Kinds
- Lot of Dishes & Glassware
- Bar Stools
- Cookie Jars
- Kerosene Lanterns
- Copper Lined Smoke Stand
- Toys
- Manual Typewriters
- Wooden High Chair
- Logging Tongs
- Skateboard
- Painted MoPac Wooden Caboose
- Antique Rocker
- Lot of Bassmaster Magazines from Early 70's
- Lot of LP Albums
- Antique Dining Room Table
- Lot of Children's Books
- Rotary Type Telephone
- Metal Outside Chairs
- Metal Kettle w/Ring
- Iron Wagon Wheels
- Pair of Glass Tear Drop Candle Lamps
- Flat Irons
- Running Gear for 4 Wheel Trailer

MISCELLANEOUS:

- Wall Hung Marble Shelf
- Vases
- Lot of Handicap Equipment
- Stereo System w/Speakers
- Clocks
- Lot of Linens & Towels
- Blanket Rack
- Costume Jewelry
- Coin Counter
- Paymaster Check Writer
- Storage Cabinets
- Tractor Draw Boards
- Large Pressure Cooker
- Christmas Ornaments
- Mop Bucket w/Squeegee
- 2 Old Trailers
- 2 Water Troughs
- Steel "I" Beam
- Scrap Iron
- Copper Tubing
- Lot of Electrical
- Lot of Lumber
- Schlitz Pool Table Light
- Wooden Coca Cola Cases
- Old Soda Bottles
- Wash Tub
- Trolling Motor
- VCR Player
- 4 Drawer File Cabinet
- & Much, Much More



FOUTS HOTEL REGISTRATION: Copy of Registration for 1902-1903-1904 & 1905 Frontier Days from Neelyville, MO (Reproduction Copy)

Auctioneers Note: ABOUT THE HOME

This Home was Well Built in 1973. Mr. Baumgardner was a School Teacher for Building and Trades in The Poplar Bluff Area and Built Some Fine Homes

"Go Online For More Information On Home"

Real Estate Will Be Shown, By Appointment Only, By Calling Auction Company or Go On Line for More Details

www.speedyketchersideauctionandrealty.net

5 Bedroom • 4 Bath Brick Home • 5,000 Sq. Ft. • Poplar Bluff, MO REAL ESTATE & LIVING ESTATE AUCTION

OWNER: Mr. Jake Baumgardner

LOCATION: 3022 N. 14th Street (Corner of 14th & Ginger Street) in Poplar Bluff, MO

DIRECTIONS: North Main Street to Barron Road and Turn North on 14th Street &

WATCH FOR SIGNS!! WATCH FOR SIGNS!! WATCH FOR SIGNS!!

Due To Health Reasons, Well Known Businessman and Educator, Mr. "Jake" Baumgardner Has Entered Into Assisted Living and Has Decided to Sell His **Real Estate • Furniture & Appliances • Antiques & Collectibles • Four Wheeler • Tools • Lawn & Garden • Sporting Equipment and Much More** Will Be Sold On:

Saturday Morning

Rain or Shine

10:00 A.M.

JUNE 29, 2013

Terms: See Below



TERMS ON REAL ESTATE: 10% Down Day of Auction • **3% Buyers Fee** (10% & 3% Will Be Paid By Separate Checks). Taxes Will Be Prorated to Date of Closing. Title Insurance will Be Split 50/50 Between Buyer and Seller. Seller to Furnish General Warranty Deeds. Possession Will Be at Closing.



SPEEDY KETCHERSIDE

Auction & Realty



Poplar Bluff 573-785-8800
Lake Wappapello 573-222-8228
Home Phone 573-222-8815
Fax Number 573-222-8321

E-Mail: speedyketcherside@hotmail.com
www.speedyketchersideauctionandrealty.net

9967 D Hwy T
Wappapello, MO 63966

Member of State & National Auctioneers Association
SPECIALIZING in Lake Property & AUCTIONS of all kinds

LICENSED, BONDED & INSURED

MISSOURI AUCTIONEERS LICENSE #1
ARKANSAS AUCTIONEERS LICENSE #1910



SPEEDY KETCHERSIDE

Auction & Realty



Poplar Bluff 573-785-8800
Lake Wappapello 573-222-8228
Home Phone 573-222-8815
Fax Number 573-222-8321

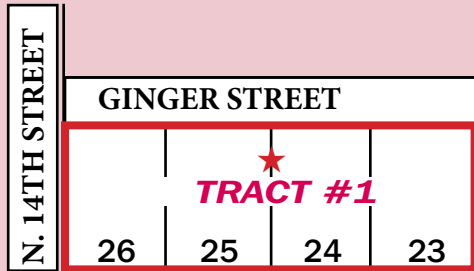
E-Mail: speedyketcherside@hotmail.com
www.speedyketchersideauctionandrealty.net

Member of State & National Auctioneers Association
SPECIALIZING in Lake Property & AUCTIONS of all kinds

LICENSED, BONDED & INSURED

MISSOURI AUCTIONEERS LICENSE #1
ARKANSAS AUCTIONEERS LICENSE #1910

9967 D Hwy T
Wappapello, MO 63966



More About the Home

Upstairs

KITCHEN: 12'x 18-1/2' Plus (+) 3-1/2' x 6' to Dining Area and 3-1/2' x 6-1/2' to Garage. Built-in Whirlpool Imperial 500 Dishwasher • Kitchen Aid Range Hood • 27' Floor Cabinets • 31-1/2' Wall Cabinets

DEN: 15'x 15' w/Brick Wood Burning Fireplace w/Earth Stove Insert w/Blower • Storage Closet • Lighted Ceiling Fan

FORMAL DINING ROOM: 12'x 13' w/ Large Glass Chandelier w/Dimmer Switch

LIVING ROOM: 12-1/2'x 22' w/Large Window

ENTRANCE FOYER: 5'x 9-1/2' w/DbI Coat Closet

HALLWAY: 3-1/2'x 35' w/Lg Linen Closet w/Shelving

BEDROOM #1: 14'x 15' w/7-1/2' x 9' Full Bath w/Shower w/Handicap Railing • 6-1/2' Floor Cabinets • Large Mirror • 7-1/2' x 5-1/2' Lighted Walk-in Closet

BEDROOM #2: 12'x 14' w/5' x 5' Walk-in Closet

Downstairs

KITCHEN: 12'x 12-1/2' w/6' Snack Bar w/Cabinets • Drawers • 8' Cabinet w/DbI Stainless Steel Sink • 21' of Wall Cabinets • 11' of Floor Cabinets • Walk-out Door to Patio Area

FAMILY ROOM: 14-1/2'x 24' w/Brick Wood Burning Fireplace w/Insert

ENTERTAINMENT ROOM: 12'x 26' w/8' Built-in Bar • Mirrored Back Bar w/Sink • Cabinets • Storage Under Stairway

STORAGE ROOM: 15'x 9-1/2' Plus (+) 6' x 12' Plus (+) 6' x 4' (Located Between Entertainment Room and Pool Room)

BATHROOM: 7'x 9-1/2' Full Bath w/ Shower • 9-1/2' Counter w/DbI Sinks & Make-up Area • 2 Beveled Edge Mirrors (Located Between Bedroom 2 & 3)

BEDROOM #3: 12'x 14' w/Lighted Ceiling Fan • 5' x 5' Walk-in Closet

BEDROOM #4: 12'x 19' • 5' x 8' Lighted Walk-in Closet • **Three Quarter Bath (3/4)** • 7' x 8' w/Shower w/ Built-in Handicap Seat • 5' Floor Cabinet • Linen Closet

LAUNDRY ROOM: 5-1/2'x 6-1/2' w/Wrap-a-Round Shelving and Washer & Dryer Hookup

HALF BATH: 5-1/2'x 5' w/5-1/2' Of Floor Cabinets

GARAGE: 25'x 24' 2 Car Garage w/1/2 HP Do-It Security Plus Electric Garage Door Opener • Lots of Custom Built Storage Cabinets in Shop Area

TREATED DECK: 12'x 8' Walkout Deck From Garage w/8' Bench Seat

STAIRS TO BASEMENT: 3' X 16'

POOL ROOM: 12-1/2'x 20' w/Pool Table

HALF (1/2) BATH: 5'x 8' Located off of Pool Room

BEDROOM #5: 12-1/2'x 15' (Mr. Jake Used It for Work Shop) Also Safe Room For Storms.

HALLWAY: 4'x 19-1/2' w/Linen Closet

CATCH ALL/BACK DOOR: 5-1/2'x 11-1/2' Room to Back Entrance of Home

BATHROOM: 6'x 11' Three Quarter (3/4) Bath w/Shower

LAUNDRY ROOM: 11'x 7' w/Washer & Dryer Hookup

- Large Double Concrete Driveway
- Central Heat & Air
- 40 Gallon Hot Water Heater
- 36' x 15' Concrete Patio Area w/ Brick Walls
- Sidewalk to Back Door

- **SHOP:** 24' x 30' w/15' x 30' Lean To (Shop Has Concrete Floor)
- All City Utilities Available



FURNITURE & APPLIANCES:

- Whirlpool 22 Cu. Ft. Refrigerator w/Ice Maker
- Electric Fireplace w/Heater
- Whirlpool Estate HD Super Capacity Washer
- Kenmore Dryer (Like New)
- Emerson Microwave Oven
- GE Hepa Air Purifier
- 12 Amp Eureka Vacuum Cleaner
- Whirlpool Electric Range
- Electric Handicap Lift Chair
- Couch
- Chairs • Rockers • Wingback • Parlor & More
- Coffee & End Tables
- Lamp Tables
- Glass & Oak Bookcase
- Breakfast Set w/3 Chairs
- Entertainment Center Cabinet
- Corner What Not Shelf
- Three Bedroom Sets (3 Piece, 4 Piece & 5 Piece)
- Roll-a-Round TV Stands
- Fans & Heaters
- Blanket Rack
- Metal Desks
- Crank type Hospital Bed w/Side Rails Chrome Craft Table w/Chairs
- & Much More

FOUR WHEELER & SPORTING GOODS:

- Kawasaki Bayou 220 4 Wheeler
- Horton Cross Bow w/Bolts (Arrows)
- Lot of Fishing Equipment
- Coinmaster 6000/D Metal Detector
- Shotgun Shells
- Deer Horns & Turkey Beard Collection
- 3 Golf Bags w/Clubs
- Folding Poker/Game Table
- Regulation Size Pool Table (Complete)

TOOLS & LAWN & GARDEN:

- Oklahoma Joes BBQ Pit
- Smoker
- 3' Step Ladder
- Lot of Hand & Power Tools
- Lot of Yard & Garden Tools
- Model S1-621 Electric Snow Blower (Used Once)
- Two (2) Table Saws
- Electric Weed Eaters & Leaf Blowers
- Wen 2-1/2HP Electric Chain Saw
- Battery Charger
- Creeper
- Coleman Fuel Heater
- Bug Lights
- Woodworking Tools & Furniture Clamps
- Stack Roll-a-Round Tool Box
- Metal Tool Boxes
- 16' Aluminum Extension Ladder
- Milwaukee HD Rotary Hammer
- Heavy Built Post Driver
- 4' Aluminum Level
- Hand Held Grinder
- Floor Jack
- Large Trash Can on Wheels
- New Rolls of Edging



STORAGE SHED:

Storage Shed Full of Over Seventy (70) Years Accumulation