

PUBLIC AUCTION

OWNER: Mr. & Mrs. Phillip Curry

Location: From Business "67" in Poplar Bluff take "PP" Hwy West (Next to Burger King) & Go 10 1/2 miles to Butler County Road 425 & 426 Turn Left & make a Quick Right on "426" and Go 3 1/2 miles to Butler County Road 436 Turn Right and go One Mile &

WATCH FOR SIGNS!! WATCH FOR SIGNS!! WATCH FOR SIGNS!!

Mr. & Mrs. Curry have Excess Equipment to Include **Backhoe • Camper • Horse Trailer • Tri-Axle Equipment • Trailer • Truck • Car • Boxed-in Trailer • Boat, Motor & Trailer • Concrete Saw • Air Compressor • Gang Box • Outboard Motor • Office Furniture • Fireplace Bricks • Furniture • China • Bathroom Appliances • 5 Baby Goats • Pallet Jack • Cabbage Patch Dolls & Much Much More on....**

SATURDAY MORNING
Rain or Shine

10:00 A.M.

SEPTEMBER 3, 2016
Terms: Cash

Backhoe: 1973-580 Case Construction King Extend-A-Hoe (Ready to Go to Work) Diesel w/New Injector Pump • New Fluids & 2' Bucket

Backhoe Parts: 480 Case Construction King Parts (3 Speed Automatic) Cylinders & Other Parts.

Trailers:

- 1976 Four (4) Horse Tandem Axle Horse Trailer • Delta w/ New Wiring • 5th Wheel.
- 2016 Home Made Tri-Axle Trailer w/Electric Brakes • Ramps • Pintle Hitch • Lights Work • Inspected w/Title • Heavy Duty Axles (no Trailer Axles).
- Tandem Axle 20' Trailer w/ Electric Brakes • Wood Floor • 2016 Home Made w/Title • 7'x10 1/2" Boxed-in Trailer w/ Back Doors

Camper:

2009 28' Dutchman Travel Camping Trailer w/One Large 12' Slide out • Interior Good w/All Appliances • Standup Shower • Small Front End Damage • New Batteries • Roof Air • Bumper Hitch.

Construction Equipment:

- Pallet Jack
- Tile Cutter on Stand
- Rol-Air Air Compressor
- Concrete Board Siding
- Senco Screw Gun
- 2-100# Fuel Tanks

- Pipe Vise w/3 Legs
- Hay Ring
- Target Pac IV Walk Behind Gas Concrete Saw w/13HP Honda Engine

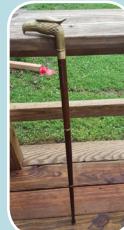
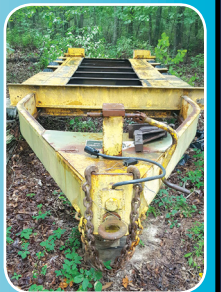
- Gangbox: Greenlee Lockable Box x3'x2'x4' on Castor Wheels (Like New) & Much More.

Miscellaneous:

- Nerf Running Boards for 98 to 05 Dodge Truck
- Silverware
- Dishes
- Windows
- Lot of Cookie Jars
- 4 Tires/Rims LT 265/70R17 for 3/4 Ton Dodge Ram
- 4 Tires/Rims 31x10.50 R15LT*6 Lugs Alum w/Tires
- Truck Bed Cover*Leather for Long Bed
- Lot of Blankets
- Cobalt Blue Dishes
- New Sinks & Bathroom Vanities (Porcelain & Metal)

- Lot of Butcher Block Cutting Boards
- (New 32" Emerson Flat Screen LED TV in Box w/Two (2) Year Warranty)
- Bathroom Top Sink w/Vanity
- 300 m/l Laclede Gas Fire Bricks (For BBQ Pit)
- 5' Damper
- Lot of Cut Lime Stone
- Lot of Black River Quarry Stone
- Extra Parts for Camper
- Frame for Camper w/Slide Out
- Lot of Tools
- Lot of Costume Jewelry
- 2 Sewing Machine Cabinets
- Lot of Lamps

- 2 Sets of China
- Amana Radar Range Microwave (78 Model) Works
- King Size Beds
- Stove Top
- Built in Oven
- Cabbage Patch Dolls
- Duck Lamps
- Crystal Tea Drop Lamp
- Glass Smokers Stand
- Red, White & Blue Leather Jacket
- Gentleman's Brass Cane
- Set of William James Yard China w/Rooster
- Lot of Nick Nacks
- Canon AE-1 Camera, 35 mm-Lenses and Flash Attachments



AUCTIONEER'S NOTE:
Something For Everyone So Please Be On Time!!!

AND MUCH, MUCH MORE



SPEEDY KETCHERSIDE
Auction & Realty

Member of State & National Auctioneers Association
SPECIALIZING in Real Estate, Estates & AUCTIONS of all kinds

LICENSED, BONDED & INSURED
MISSOURI AUCTIONEERS LICENSE #1
ARKANSAS AUCTIONEERS LICENSE #1910



Poplar Bluff 573-785-8800
Lake Wappapello 573-222-8228
Home Phone 573-222-8815
Fax Number 573-222-8321
E-Mail: speedyketcherside@hotmail.com
www.speedyketchersideauctionandrealty.net

9967 D Hwy T
Wappapello, MO 63966