

AUCTION

**REAL ESTATE • RAILROAD • TRUCK • TOOLS
MOTOR HOME • GUNS • HORSE DRAWN BUGGY**

OWNER: Mr. & Mrs. Tom and Debra Pruitt (formerly Pruitt Glass Co.)

Location: 314 Peach Street • Corner of 325 Pine and Peach Street • Poplar Bluff, MO

Directions: In Poplar Bluff, Take East Pine (Business 60), Go Past Court House to Bottom of Hill on Left and

WATCH FOR SIGNS!!! WATCH FOR SIGNS!!! WATCH FOR SIGNS!!!

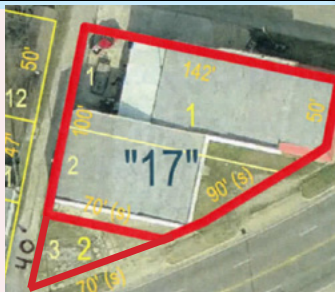
Mr. & Mrs. Pruitt, due to health reasons, are cutting back and Semi-Retiring and Will Be Selling the Following, To Include:
COMMERCIAL REAL ESTATE, ONE LARGE LOT OF MOTORIZED RAIL CARS (30 TO 35) MOTOR HOME, TRUCKS, LOT OF RAILROAD & TRAIN MEMORABILIA, GUNS, TOOLS OF ALL KINDS, HORSE DRAWN BUGGIES, SLEIGHS, SIGNS AND MUCH MORE ON

SATURDAY MORNING 10:00 A.M. MAY 30, 2015
Rain or Shine Terms on Real Estate: See Below

REAL ESTATE:

- Building has 8,454 Sq. Ft. M/L w/ Added Area for Total of 8,689 Sq. Ft. M/L.
- Built in 1952 (Formerly Pruitt Glass Co.)
- Taxes: \$1,225.00 per year
- Lot Size: 160' Pine St. Frontage x 50' North "D" Street x 142' Peach Street x 140' East Side (Joins Alley to Point of Beginning)
- Income Producing: 24' x 45' Front Part (Currently Rented)
- Building has 16' Ceilings

- Doors - 12' Roll Up
- Big Room: 77' x 50' Divided Into Three (3) Parts w/Metal Trusses
- One Three Quarter (3/4) & Two One Half (1/2) Baths
- Four (4) Office Spaces
- 50' x 21' Tool Room
- Paved Road Frontage & Back



Call Auction Co. at 573-222-8228 for Private Showing or Go Online at www.speedyketchersideauctionandrealty.net

VERY GOOD PIECE OF PROPERTY AND A MUST SEE!



Motorized Rail Cars & Parts • Railroad Memorabilia

of all Kinds & Much More (Note: Some Rail Cars Run and Some for Parts)

- Wooding Car #424 & 432 (Good Shape) (Note: 596 Cars made and Pruitt's own Two (2) of them)
- Fairmont A-8 Motor Car
- M-9 Two Seater Rail Car
- V-8 272 Engine
- Motor Car Engine (Hooked up on Frame)
- Weyerhaeuser Cab & Cart (All kinds and sizes)
- Narrow Gauge Motor Car
- Fairmont Motor Car Motor ROC
- NOVO Gas Powered Engine
- Fairmont 2 Cyl M19-AA
- Front Axle for Small Motor Car
- Large Collection of Rail Motor Car Wheels
- Briggs & Stratton New 20 HP Aluminum Engine
- Motor Car Seats & Windshields
- Motorola 2 Way Radio
- Orange Flashing Lights for Top of Rail Car
- 4 Wheel Dollies for Moving Cars in Shop
- Large Lot of Motor Cart Books • Front Ends Etc.
- Large Lot of Motor Cart Parts of All Kinds
- Approx. 30 to 35 Motorized Rail Cars, Some Excellent Shape • Some Drivable and Some for Parts
- Load Leveling Trailer Hitch
- Oil Drains on Stands
- Aluminum Walk Plank/Boards
- Double Work Light on Stand
- Handy Man Jacks
- Guardian Power 10 Speed Heavy Duty Drill Press on Stand
- Portable Air Tank
- 2 HP Air Compressors
- 2 Large Vertical Cast Iron Air Compressors
- Ratcheting Tie Downs

Mr. & Mrs. Pruitt Have Been Collecting & Traveling with Motor Car Collecting for Over 20 Years and Were Members of Several Motor Car Clubs.

Train & Rail Car Parts & Memorabilia

- Railroad Switch Stand for Changing Tracks
- Engine Air Horns (Set of 5 Horns)
- Two (2) End of Train Signals
- Hercules Strong Box w/Keys
- Large Lot of Railroad Lanterns (All Kinds)
- RR Crossing Signs
- Signal Lights
- Deitz Lantern
- Switch Lamps
- Kerosene Car Lamp
- Mile Post "500" For Onlines
- GM&O Railroad w/Switch Stand for Mile Marker 500
- 2 Track Signs
- Railroad Crossing Signs
- Stop Signs
- Railroad Switch Stand for Changing Tracks
- Work Safety Nets
- Cherry Picker/Motor Puller

For any questions concerning the Railroad cars or memorabilia, please call: 573-776-6104 and ask for Tom!

MORE ON OTHER SIDE

TERMS ON REAL ESTATE: 10% Down Day of Auction • 3% Buyers Fee (10% & 3% Will Be Paid By Separate Checks). Taxes Will Be Prorated to Date of Closing. Title Insurance will Be Split 50/50 Between Buyer and Seller. Seller to Furnish General Warranty Deed. Possession at Closing.



9967 D Hwy T
Wappapello, MO 63966

SPEEDY KETCHERSIDE
Auction & Realty

Member of State & National Auctioneers Association
SPECIALIZING in Real Estate, Estates & AUCTIONS of all kinds

LICENSED, BONDED & INSURED
MISSOURI AUCTIONEERS LICENSE #1
ARKANSAS AUCTIONEERS LICENSE #1910



Poplar Bluff 573-785-8800
Lake Wappapello 573-222-8228
Home Phone 573-222-8815
Fax Number 573-222-8321
E-Mail: speedyketcherside@hotmail.com
www.speedyketchersideauctionandrealty.net

AUCTION

5-30-15 10:00 A.M.

Large Shop Tools, Welders etc.

- LeBlond HD 10' Lathe - Will Turn up to 3' Diameter w/4 Jaw & 3 Jaw Chuck - Center Rest
- Delta Bench Rockwell Radial Arm Saw w/Stand
- Aluminum Cutting Saw
- Montgomery Ward AC/DC Arc Welder on Cart
- Lot of Welding Equipment
- Antique Post Vise
- Lot of Hand & Power Tools of All Kinds
- Antique Tool Box
- Lot of Cordless Screwdrivers & Drills w/Cases (Dewalt etc.)
- Porta Power w/Case & Pump
- Natural Gas 5 Burner Ventless Stove
- Hydraulic Lift For Back of Pickup Truck
- LP Ventless Propane Heater & 100# LP Tank
- 2 Wheeler
- Sand Blaster w/Box • Gloves & Sand Recovery Box
- Welding Carts w/Tanks, Helmets, Hoses, Gauges etc.
- Large Shop Anvil
- Blacksmith Tools w/Coal Fired Forge
- Vise on Stand
- Lincoln Wire-A-Matic 255 Welder on Cart
- Dremil Tools
- Kobalt Double Stacking Tool Box w/Large Lot of Tools on Castors
- DC Invertor CAT-518
- 36" Metal Brake made by Central Machinery
- 12 Ton Press
- Large Lot of Specialty & Hand Tools
- Buffalo 8" Electric Dual Wheel Bench Grinder
- Parts Washer
- Ajax 20 Ton Hydraulic Press
- 7" Metal Band Cutting Saw Made by Turn-Pro
- 12 Ton Hydraulic Jack
- HD Industrial Wheel Barrow
- & MORE

Electrical • Building • Iron • Collectible Cabinets

- Several Rolls of 12/2 Wire w/ Ground
- 4' Light Fixtures w/Bulbs
- Window Air Conditioners
- Lot of Lumber (All Sizes)
- Truck Bed
- Collectable Car Parts
- Squirrel Cage Fan
- Ladder
- Carts, Signs & Doors
- Lot of Scrap Iron & More

Horse Drawn Buggy & Snow Sleigh: One Horse Drawn Doctor's Buggy (New) Made in Mill Springs, MO (Like New) Two (2) One Horse Open Snow Sleighs (Good Shape)

Trucks:

- 1952 Ford Pickup Truck - 3 Speed on Column - Over Head 6 Cylinder Rebuilt Engine, Runs and Drives Good
- Extra set of Running Boards for 1952 Ford Pickup Truck
- 1951 Ford Pickup - V-8 Engine (Needs Restored)

Motor Home: 1995 27' Pursuit Motor Home w/Roof Top Air • Generator • Self-Contained • Full Size Bed • Table Folds for Guest Bed (Sleeps 4) • Heat & Air Works Good • Runs & Drives Good • Approximately 30,000 Miles • Automatic • 3/4 Bath • Sliding Door for Bedroom in Back • Custom Built Cabinets • Refrigerator Gas/Electric • 3 Burner LP Cook Stove • Quasar Microwave Oven • Lighted Range Hood • Double Stainless Steel Sink • Dual Wheels on Back • Roll Out Canopy • 454 Chevrolet Engine • Automatic Single Roof Air • Heat & Air Works Good & Runs & Drives Good

Hot Tub: Jacuzzi Hot Tub w/Built-in Heater. Holds 3 People

Tanning Bed & Pedicure Stool

Camper: Silver Streak Aluminum Camper (Needs Work or Restored) Made in the Order of Air Stream Camper.

Guns: Rifles & Pistols

- 9mm Pistol P1 w/Holster
- Ruger 45 Caliber Black Hawk Revolver (made in 200th year of American Liberty) w/Holster
- Ruger Mini 14 Stainless Steel Ranch Rifle • 223 Caliber w/Scope
- Numrich Arm 45-70 Remington
- Mdl 1895 Springfield Armory Rolling Block Bolt Action 30-40 Krag
- 35 Caliber Carbine
- Mdl 721 w/Scope 30:06 -Bought New in 1948 (Looks Like New)
- Springfield Bolt Action 30:06
- 308 Test Gun
- 1917 30:06 Bolt Action w/Scope
- 1917 30:06 Bolt Action without Scope
- 303 British
- Two (2) M-1 30 Caliber Carbines
- Springfield 30:06 (Needs Assembly)
- Mauser Mdl 35-308 Bolt Action w/Sling
- Mauser Mdl 98-8 mm Bolt Action
- 37mm Flare Gun
- 25-35 Winchester WCF Lever Action 1894 Mdl Approximately 100 yrs old
- Swiss Bolt Action 7.5 Rifle w/Ammo

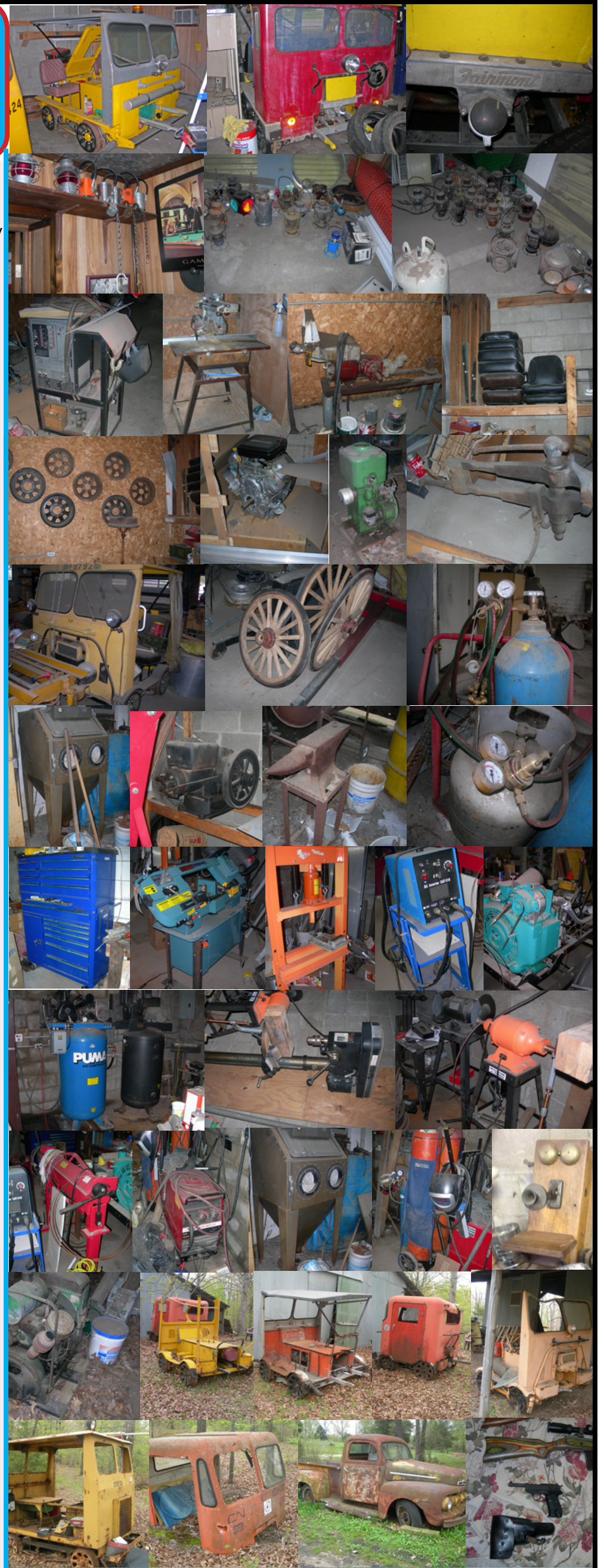
Gun Parts and Reloading Equipment:

- Lots of Gun Parts (All kinds)
- 45 Caliber Pistol Shoulder Holster
- Large Lot of Pistol & Rifle Reloading Equipment (All Sizes)

SHELLS TO INCLUDE: 30 Cal • 5.5-6 mm • 5.5-640 Several Boxes-38 Special • 308 Blanks • 223 Reload Shells • 380 Automatic • 9mm Rapid Fire Blanks • 25 Caliber Automatic • 385 • 32-30 Winchester • 30:06

- Springfield
- Lots of Shot Gun Shells (Duck & Pheasant)
- Gun Stock for A1 Grand
- Folding Stock for 30 Caliber
- 301 Piece Work Smith Dremil Tool
- Seeco Melting Furnace for Melting Bullets
- Large Lot of Bullet Molds
- Work Tables & Benches
- Gun Cleaning Kits
- Lubricating Bullet Sizers
- Approximately 10,000 Primers of all sizes
- Lot of 308 Shells (Loaded & Ready to go)

MORE ON OTHER SIDE



SPEEDY KETCHERSIDE

Auction & Realty



Member of State & National Auctioneers Association
SPECIALIZING in Real Estate, Estates & AUCTIONS of all kinds

LICENSED, BONDED & INSURED
MISSOURI AUCTIONEERS LICENSE #1
ARKANSAS AUCTIONEERS LICENSE #1910

9967 D Hwy T
Wappapello, MO 63966

Poplar Bluff 573-785-8800
Lake Wappapello 573-222-8228
Home Phone 573-222-8815
Fax Number 573-222-8321
E-Mail: speedyketcherside@hotmail.com
www.speedyketchersideauctionandrealty.net