

Lake Wappapello Real Estate & Estate Auction

OWNER: Estate of Mr. & Mrs. John & Patricia Dunlap

Location: Very End of Point, Past Lost Creek Lodge, w/Beautiful View!

Directions: From Greenville, MO, Take Business "67" South to "D" Highway, Turn Left, Go 3-1/2 Miles to "BB" Hwy, Turn Right, Go 5.1 Miles to End of Pavement, Continue on Ct. Rd. 526, Bear to the Left, Continue to Lost Creek Lodge 4 Miles and Go to End of Road to Subject Property and WATCH FOR SIGNS!!! WATCH FOR SIGNS!!! WATCH FOR SIGNS!!!

By Court Order, To Settle the Final Estate of Mr. & Mrs. Dunlap, The Following, to Include: Real Estate, LP Tanks, Furniture & Appliances, Antiques & Collectables, Riding Mower, Yard & Garden, All Kinds of Shop Tools & Machinery, Boat & Motors and Much More Will Be Sold to the Highest Bidder, Regardless of Price on:

SATURDAY MORNING 9:30 A.M. NOVEMBER 8, 2014
Rain or Shine Terms on Real Estate: See Below

REAL ESTATE: Consists of Main Home (Mobile Home w/ Addition) & Wrap-A-Round Deck w/Bar-B-Que Deck Area • #2: Guest Cabin w/ Deck • #3: Two Car Garage & Large Shop • #4: Boat House w/Rails to Lake • #5: Well House • #6: Storage Shed - All Setting on 8 Lots & Extra Parcels.

- **REAL ESTATE** is Surrounded on Three (3) Sides by Water and is Located on Point
- **GUEST CABIN:** Two (2) Bedroom, One Bath w/Small Deck & Overlooks Lake • 547 Sq. Ft. M/L
- **GARAGE/WORK SHOP:** Large Shop w/220 Electric, Concrete Floor & 2 Car Garage • 820 Sq. Ft. M/L
- **STORAGE HOUSE:** 123 Sq. Ft. M/L
- **WELL HOUSE:** Well Insulated w/ Deep Well Pump & Bladder Type Holding Tank, Concrete Floor & Storage Pantry for Food • 90 Sq. Ft. M/L
- **BOAT HOUSE:** w/Tracks to Lake to Launch Boat w/Large Shuttle 2 HP Motor & Cable, Roll-Up Garage Door • 625 Sq. Ft. M/L

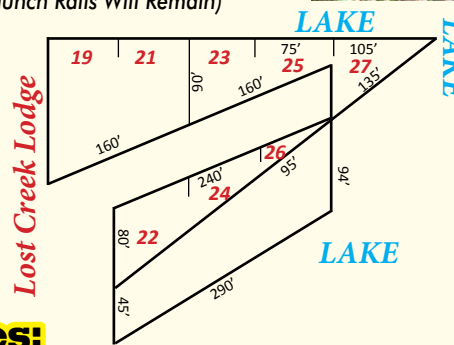
BRIEF LEGAL: All of Lots #19-21-22-23-24-25-26 & 27 of Joe Fox Subdivision and Extra Parcel (See Plat)

(Auctioneers Note: Corp Will Determine If Boat Launch Rails Will Remain)



Real Estate Shown By Appointment Only,
 By Calling Auction Company at 573-222-8228
 Go Online For More Information
www.speedyketchersideauctionandrealty.net

- LP Tanks:**
- 500 Gallon LP Tank
 - 150 Gallon LP Tank
- Welding:**
- Cutting Torch Set w/ Bottles, Cart, Hoses & Gauges
 - Lincoln 225 Amp Welder



Furniture & Appliances:

- Flat Screen TV
- Igloo Small Refrigerator (NIB)
- Desk (NIB)
- BBQ Grill
- Min. New Wave Oven
- Leather Office Chair (NIB)
- Woods Upright Commercial Freezer
- 2 Dining Room Tables w/Chairs
- Twin Beds
- Apartment Size Refrigerator
- Portable Bar w/Stools
- Coffee & End Table
- Wood Burning Fire Acc.
- Whirlpool Washer
- Whirlpool Dryer
- Thomas Organ
- Amana Refrigerator (Like New) w/Freezer on Bottom
- Microwave Oven & Stand
- Chests & Dressers
- Metal File Cabinets
- Fans & Heater Fans
- & Much More

Antiques & Collectables:

- Cedar Lined Blanket Chest
- Hand Stitched Blankets
- Flat Top Steamer Trunk w/ Drawer
- Antique Tables
- Old Collectable Pictures
- Colored Collectable Drawings
- Corner Whatnot Stand
- Wash Tubs
- 4 Tackle Boxes w/ Collectable Lures
- Fishing Rods & Reels
- Lot of Metal Coolers (Trip-Nic Etc.)
- Kitchen Cabinet w/ Roll Top Cover
- Rotary Dial Telephone
- Old Collectable Tins
- Kerosene Lanterns
- Metal Detectors
- Small Child's Chair
- China Cabinet
- Wildlife Plates
- Sad Irons & Metal Kettle
- Lot of Antiques & Collectable Pictures & Much More

Yard & Garden • Riding Lawn Mower

- Noma All Wheel Steering Riding Lawn Mower • Automatic Transmission • 15-1/2 HP B&S Engine • 43" Mulch Ready Power Deck
- Aluminum Ladders (All Sizes) & Wooden Ladders & Roof Jack Ladder
- Wooden Patio Furniture w/ Cushions
- Metal Folding Chairs
- Model A Jack
- Vector XL/C Blade Type Walk Behind Cutter
- Tree Trimmer
- Chains & Chain Hooks
- Homelite BP 30185 Gas Powered Back Pack
- Grass Getter Gas Powered Weed Eater w/Metal Brush Blade
- Craftsman Gas Powered 210 MPH Leaf Blower
- Live Animal Trap
- Electric Leaf Blower
- 3-1/2 HP Push Mower
- Sears Gas Powered Leaf & Limb Mulcher
- Push Type Lawn Seeder
- Rubber Tired Wheel Barrow
- Homelite HBC - 18 Classic 30CC Gas Powered Weed Eater
- Homelite Gas Powered Hedge Trimmer
- Electric Soil Blender
- Yard & Garden Tools

Auctioneers Note: This Property is Well Located & Comes w/Beautiful View of Lake on Three (3) Sides. Homes are Older & Needs Fixed Up But Real Estate Has a Park-Like Setting and Has Been Well Maintained with Lots of Flowers & Shrubs. **"COME SEE"**

Boats, Motors, Etc.

- 14' Richline "V" Bottom Boat
- 5-1/2 HP Johnson Seahorse Outboard
- 9-1/2 HP Johnson Outboard Motor
- Detroit Antique Outboard Motor (Very Rare)
- Outboard Motor Gas Cans (Metal & Plastic)
- Life Jackets
- Boat Paddles
- Stainless Steel Props
- Assortment of Different Size Outboard Flywheels for Adjusting Props

Power Tools & Hand Tools:

- Schumacker 2/10/40 Amp Charger w/100/200 amp Starter/Tester
- 16 HP Vanguard Gas Powered Generator on Wheels, 10,000 PPG
- 2 Table Saws
- MW Powkraft Roll-A-Round Stacking Tool Box
- Lot of Hand & Power Tools of All Kinds
- Central Pneumatic 21 Gallon Air Compressor
- 12 Volt Cordless Drills
- Belt Sanders & Sanding Belts
- 16 Gallon Wet/Dry Vacuum
- Delta Woodworking Lathe w/Lathe Tools
- Craftsman 10" Radial Saw on Stand
- Black & Decker Workmate
- 12" Band Saw/Sander
- 4-1/2" Metal Cutting Band Saw on Stand
- Several Dual Wheel Grinders
- Wood Planer
- Woodmaster Tool Inc.
- Craftsman Jig Saw on Stand
- Pit Bull HD 3/4 HP Drilling Machine
- Battery Charger
- Skil Saws & Blades
- Material Handler Rollers
- Vises
- 9' x 5' Heavy Built Work Table
- Pipe Threaders & Pipe Vise
- Lot of Deep Sockets (All Sizes)
- Pittsburg Forge Large Socket Set Up to 2" w/Case
- Furniture Clamps (All Sizes)
- Work Table w/Mounted Vise
- Grease Guns
- Lot of Electrical Hand Tools (All Kinds)
- Lot of Hand Saws
- Paint Sprayers
- Calibers • Torque Wrenches • Tap & Dye Sets
- Air Palm Sanders & Air Sanders Etc.
- Flaring Tools
- Dent Pullers
- Lot of Electrical Testing Equipment
- Bolt Cutters
- Large Pipe Wrenches
- Ratchet Chain Hoist
- Creepers
- & Much More!!!

Misc:

- Window Air Conditioners
- Electric Heaters
- Microwave Ovens & Stands
- Tri-fold Privacy Panel
- Assortment of Lumber
- Folding Saw Horses
- Table Fans
- Aluminum Car Ramps
- Several File Cabinets
- Fire Extinguishers
- Jerry Military Gas & Water Cans
- Over "50" Military Ammo Cans Full of Nuts, Bolts, Screws, Washers & Small Parts
- Health-A-Meter Scales
- Lot of Extension Cords
- Galvanized Buckets (All Sizes)
- Kerosene Cans
- Rack Full of Car Fuses
- Wood Burning Shop Stove (Small)
- 2 Folding Kitchen Step Stools
- Large Wood Box
- 2 Combination Safes
- Coolers
- Double Door Metal Cabinets
- Draw Knives & Wood Planes
- Lamps - Floor, Hanging, Table
- Radiant Heater
- Pots, Pans & Dishes
- Serving Carts on Wheels
- Firewood Cart • Fireplace Tools
- CD/VCR Tape Player & Movies
- Lot of Home Repair Books
- Several Vacuum Cleaners
- Fern Stands
- Paper Cutter
- Handicap Walker w/ Seat
- Stand-A-Lone Walking Sticks
- Table Top Mixer w/ Stainless Steel Bowls
- Magazine Racks
- Seasoned Firewood
- Garden Hoses & Hose Box

Attorney for Estate: Janet Brown w/Brown & Burns LLC
 Personal Representative to Estate: Mr. Charles Dunlap

TERMS ON REAL ESTATE: 10% Down Day of Auction • 3% Buyers Fee (10% & 3% Will Be Paid By Separate Checks). Taxes Will Be Prorated to Date of Closing. Title Insurance will Be Split 50/50 Between Buyer and Seller. Seller to Furnish General Warranty Deed. Possession at Closing.



SPEEDY KETCHERSIDE

Member of State & National Auctioneers Association
 SPECIALIZING in Real Estate, Estates & AUCTIONS of all kinds
 LICENSED, BONDED & INSURED
 MISSOURI AUCTIONEERS LICENSE #1
 ARKANSAS AUCTIONEERS LICENSE #1910

Auction & Realty






Poplar Bluff 573-785-8800
 Lake Wappapello 573-222-8228
 Home Phone 573-222-8815
 Fax Number 573-222-8321
 E-Mail: speedyketcherside@hotmail.com
www.speedyketchersideauctionandrealty.net