

# LAKE WAPPAPELLO REAL ESTATE & ESTATE AUCTION

**Owners of the Estate of Mr. & Mrs. Gene & Lurlyne Myers:  
John, Libby and Jamey Myers**

**Location:** 4180 County Road 510 • Lake Wappapello, MO  
**Directions:** From "T" Highway, Turn on "RA" Highway, Next to "Food Rite Grocery," Go to County Road 510, Turn Right and



**WATCH FOR SIGNS!!! WATCH FOR SIGNS!!! WATCH FOR SIGNS!!!**

Due to the Death of Mr. & Mrs. Myers and to Settle the Final Estate, The Following, To Include: **Real Estate, Camping Trailer, Riding Lawn Mower, Golf Cart, Furniture & Appliances, Antiques & Collectibles and Much More Will Be Sold On**

**SATURDAY MORNING**  
Rain or Shine

**10:00 AM**

**FEBRUARY 28th, 2015**  
Terms: See Below

**REAL ESTATE:** Consists of a Large Cedar Siding Two Story Home (Upstairs Added on Approx 7 Years Ago) w/Three (3) Bedrooms • 3 Baths • Custom Built Kitchen w/Built-in Appliances • Large Family Room w/Balcony • Two Car Carport and One Car Garage on Beautiful Well Kept Lot w/ Entrance From County Road 510 and Private Road - Owls Nest Road • View of Lake w/Nice Treated Deck.

## About the Home

- **KITCHEN/LIVING ROOM & DINING ROOM COMBINATION:** 17' x 31' W/3' x 5-1/2' Offset • Appliances Stay • Built-in Whirlpool Dishwasher • Frigidaire Built-in Microwave Oven • Sears Kenmore Electric Range • GE Profile Refrigerator Side-by-Side w/Ice and Water in Door and Fingerprint Sides • "U" Shape Cabinets • 7' x 3' Snack Bar • Double Sink
- **BEDROOM #1:** 9' x 18' Overlooking Lake
- **BEDROOM #2:** 13-1/2' x 15' w/ Entrance to Bathroom and Entrance to Office From Treated Deck • Bedroom has 8' Closet w/Beveled Edge Mirrored Front
- **OFFICE:** 8' x 14' Entrance Foyer From Deck
- **THREE QUARTER BATH:** 3' x 8'

- **FULL BATH:** 4-1/2' x 8' w/Shower & Lighted Closet
- **DECK:** 10-1/2' x 16' Treated Deck w/Entrance to Office and Carport Area
- **ENTRANCE FOYER TO UPSTAIRS:** 20' x 12-1/2' w/3-1/2' x 16' Stairway to Upstairs

*NOTE: Kitchen Area Has Lot of Built-in Pantry Area w/Louvered Doors and Cubby Hole w/Desk for Computer*

## Upstairs

- **GREAT ROOM/JUNGLE ROOM:** 34' x 24' w/Built-in Book Cases and 5' x 11' Balcony Overlooking Lake!
- **BATHROOM:** 12' x 9' Three Quarter Bath w/Closets
- **BEDROOM #3:** 14' x 12'
- **STORAGE ROOM:** 24' x 20' Located End of Great Room

## Home Has:

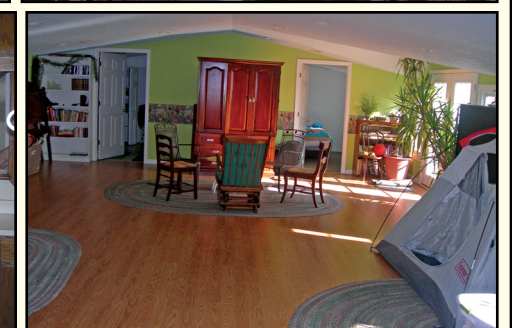
- Dual Heat Pumps for Heat & Air (One For Up - One for Down)
- County Water
- Sewer: Septic System
- Cedar Vertical Siding
- Upstairs Built On Approx 7 Years Ago
- 13' x 19-1/2' Concrete Patio Area
- Two (2) Car Carport 27' x 27'
- 40 Gallon Hot Water in Home • 30 Gallon Hot Water in Garage

## Garages:

One Car 12-1/2' x 25' w/Pre-rinse Sink • Hot Water Heater • Concrete Floor • 10' Roll-up Door w/Do It Security 1/2 HP Electric Door Lift w/Remote & Side Door

**STORAGE:** Under Home

**MORE ON OTHER SIDE**



Living Space 1,550 Sq. Ft. M/L Downstairs  
Living Space 1,090 Sq. Ft. M/L Upstairs  
2,640 Sq. Ft. of Living Space  
Carport 729 Sq. Ft.  
Garage 312 Sq. Ft.  
Storage Upstairs 480 Sq. Ft.  
4,160 Sq. Ft. M/L Under Roof

Lot Size and Legal Available Day of Auction

**AUCTIONEERS NOTE:** This Home Was Remodeled Approx. 7 Years Ago and is "A Must See"!! Beautiful Lawn w/Landscaping, Trees, Shrubs, Flowers & Driveway w/Entrance From 2 Locations.

*VIEW OF LAKE!!*

**REAL ESTATE SHOWN  
BY APPOINTMENT  
ONLY BY CALLING  
AUCTION COMPANY  
AT 573-222-8228**

**TERMS ON REAL ESTATE:** 10% Down Day of Auction • 3% Buyers Fee (10% & 3% Will Be Paid By Separate Checks). Taxes Will Be Prorated to Date of Closing. Title Insurance will Be Split 50/50 Between Buyer and Seller. Seller to Furnish General Warranty Deeds. Possession at Closing.



**SPEEDY  
KETCHERSIDE**

*Auction  
&  
Realty*



9967 D Hwy T  
Wappapello, MO 63966

Member of State & National Auctioneers Association  
SPECIALIZING in Real Estate, Estates & AUCTIONS of all kinds

\*LICENSED, BONDED & INSURED\*  
MISSOURI AUCTIONEERS LICENSE #1  
ARKANSAS AUCTIONEERS LICENSE #1910

Poplar Bluff 573-785-8800  
Lake Wappapello 573-222-8228  
Home Phone 573-222-8815  
Fax Number 573-222-8321  
E-Mail: speedyketcherside@hotmail.com  
www.speedyketchersideauctionandrealty.net



# LAKE WAPPAPELLO REAL ESTATE & ESTATE AUCTION

**SATURDAY MORNING • FEBRUARY 28th, 2015 • Rain or Shine**

## **GAMPER:**

2003 Clearwater Edition Springdale 26' Camper, Made by Keystone, w/12-1/2' Slide-Out. Sleeps 8 - Full Size Bed • Set of Bunk Beds • Hide-A-Bed Couch • Kitchen Table Folds for Bed • Self Contained • Full Bath w/Shower • Heat & Air • Refrigerator • Gas or Electric • Built-in Microwave Oven • Stereo System



## **GOLF CART:**

Club Car w/Top and Zip-On Enclosure • Red in Color and Fairly New Batteries w/Charger

## **RIDING LAWN MOWER:**

John Deere LT155 15 HP 38" Cut Hydrostatic Mower (Like New)



## **Furniture & Appliances:**

- Bedroom Furniture
- Glass Front Wood Book Cases
- Televisions
- Thomasville Table w/6 Wicker Back Chairs
- 3 Drawer Chest & China Hutch
- Small Bathroom Cabinet
- Desk
- 2 Large Cabinets w/Drawers
- Frigidaire Stack Washer & Dryer
  - HD • X-Large Capacity
- Two (2) Electric Hospital Beds
- Entertainment Centers
- Bunk Beds
- Office Chair
- Lamps
- Toby Clothes Steam Cleaner w/Rack
- Mirrored Back Shelf
- 4 Drawer File Cabinet
- 2 Whirlpool HD Large Capacity Washers
- 2 Whirlpool HD Large Capacity Dryers
- Whirlpool Built-in Dishwasher
- 15 Cu. Ft. Chest Type Freezer

## **Antiques & Collectibles:**

- Swinging Baby Cradle
- Crock Pots
- Couch w/Wicker Back
- Tables
- Pictures, Paintings & Etchings
- High Back Parlor Chair
- Printype Oliver Typewriter
- Wood Stock Typewriter
- Drop Leaf Table
- Wooden High Chair
- Tricycle
- Little Red Wagons
- Rockers
- Glassware
- Wooden China Cabinet w/ Glass Front
- Wooden Desk
- Full Size Bed
- Set of Dehorner's

## **Miscellaneous:**

- Lot of Toys & Toy Boxes
- Lot of Large Live Plants
- Hoover 12 Amp HEPA Wind Tunnel Vacuum Cleaner
- Luggage
- Water Skis
- Storage Totes
- Lot of Books
- Bicycle
- Tackle Boxes and Collection of Fishing Lures
- 2 Large Plate Glass Wall Mirrors
- **AND MUCH, MUCH MORE**



## **Yard & Garden • Tools**

- Yard & Garden Tools & Tool Rack
- Lawn Tables & Chairs
- Benches
- Small 2 Wheel Yard Cart
- Deer Tote Trailer
- Air Compressor
- Large Vise
- Lot of Tools
- 6' Fiberglass Ladder
- Tire Horse Swing
- Adjustable Shelving
- Garden Hoses & Reels
- Wheel Barrow
- Wash Tubs
- Tool Boxes and Tools

## **Four Wheeler**

90CC Small Child's 4 Wheeler

**Baseball/Softball Pitching Machine w/ Cage and Safety Net**

## **Electric Wheel Chairs:**

Two (2) Jazzy 1132 "Zero Turn" Electric Wheel Chairs (One Has Car Bumper Mount)

**MORE ON OTHER SIDE**

**For Private Showing Prior to Auction, Call Auction Company 573-222-8228 or go online [www.speedyketchersideauctionandrealty.net](http://www.speedyketchersideauctionandrealty.net)**

*Shown by Appointment Only*



# SPEEDY KETCHERSIDE

*Auction & Realty*



9967 D Hwy T  
Wappapello, MO 63966



Member of State & National Auctioneers Association  
**SPECIALIZING in Real Estate, Estates & AUCTIONS of all kinds**

**\*LICENSED, BONDED & INSURED\***  
MISSOURI AUCTIONEERS LICENSE #1  
ARKANSAS AUCTIONEERS LICENSE #1910

Poplar Bluff 573-785-8800  
Lake Wappapello 573-222-8228  
Home Phone 573-222-8815  
Fax Number 573-222-8321  
E-Mail: [speedyketcherside@hotmail.com](mailto:speedyketcherside@hotmail.com)  
[www.speedyketchersideauctionandrealty.net](http://www.speedyketchersideauctionandrealty.net)