

Commercial Real Estate AUCTION

Owners: Mr. & Mrs. Delbert (Del) & Carol Luedemann and Mrs Jean Nolin

LOCATION: West Vine Street, Poplar Bluff, Missouri

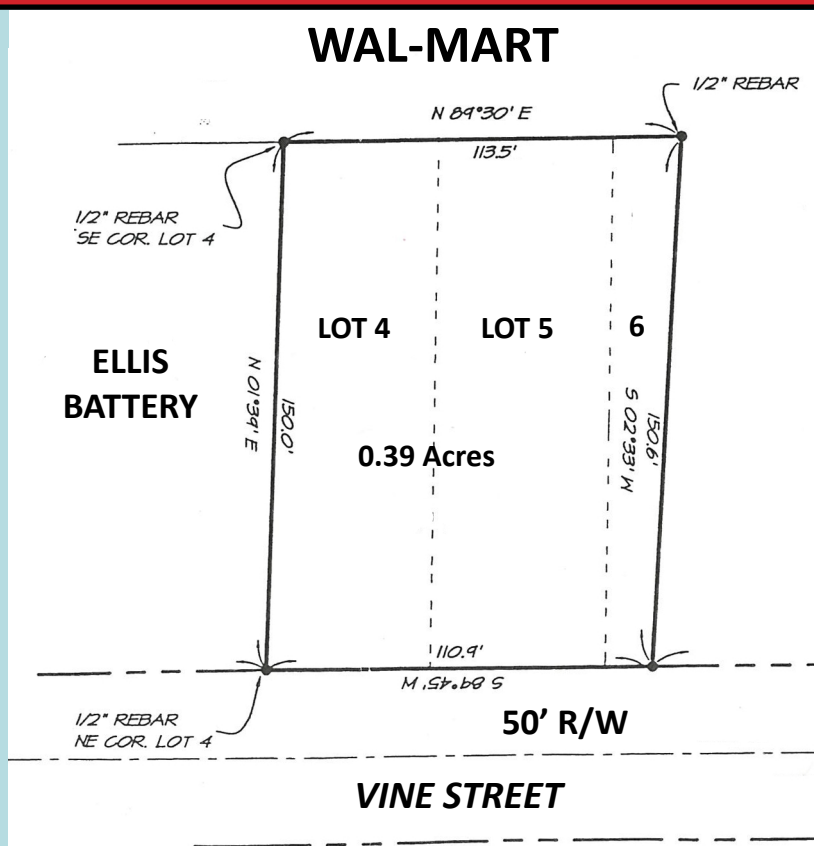
DIRECTIONS: Take 67 South to West Vine Street, Turn Right Next to Hardees, Go 1 half block to Ellis Battery. Property on Left and

WATCH FOR SIGNS!! WATCH FOR SIGNS!! WATCH FOR SIGNS!!

FRIDAY EVENING
Rain or Shine

5:30 PM

October 1st, 2021
Terms: SEE BELOW



TWO & ONE-HALF (2-1/2) LOTS THAT JOINS WAL-MART SUPER CENTER IN POPLAR BLUFF, MO
This Property has been Surveyed and All Corners will be Marked Before Day of Auction!

ZONING: Commercial C-2

BRIEF LEGAL DESCRIPTION: All of Lots 4 & 5 and Part of Lot #6 of Block 6 - Smith's 3rd Addition.

LOT SIZE: 110.4' Paved Road Frontage and 113.5' Backside Joining Wal-Mart and 150' Deep (0.39 Acres M/L)

UTILITIES: All City Utilities are Available (Water, Sewer & Electric)

TAXES: \$421.07 for 2020

COMPLETE LEGAL: Will be Furnished Day of Auction

TERMS: 10% Down Day of Auction. Balance at Closing. **NO BUYER'S FEE**



9967 D Hwy T
Wappapello, MO 63966

SPEEDY KETCHERSIDE

Auction & Realty



Member of State & National Auctioneers Association
SPECIALIZING in Real Estate, Estates & AUCTIONS of all kinds
LICENSED, BONDED & INSURED
MISSOURI AUCTIONEERS LICENSE #1
ARKANSAS AUCTIONEERS LICENSE #1910

Poplar Bluff 573-785-8800
Lake Wappapello 573-222-8228
Home Phone 573-222-8815
Fax Number 573-222-8321
E-Mail: speedyketcherside@hotmail.com